



1 Ormerod Terrace
Clitheroe | BB7 9BE

OIEO £280,000



1 Ormerod Terrace

Clitheroe | BB7 9BE



Overview

- Recently Refurbished
- Extended End-Terraced House
- Three Bedrooms
- Two Reception Rooms
- Beautiful Fitted Kitchen
- Fabulous Four-Piece Bathroom
- Private Rear Garden
- New Gas Central Heating System
- New uPVC Double Glazing
- Stone Fronted
- Forecourt Garden



A beautiful stone-fronted terraced house that seamlessly blends classic elegance with modern comfort.



Step inside, and you'll be greeted by a warm and inviting ambiance. The interior seamlessly combines classic elements with contemporary finishes, providing a comfortable and stylish living space.

The generously proportioned living areas are designed for both entertaining and relaxation. High ceilings, large windows, and a thoughtful layout enhance the sense of space and light throughout.



The bedrooms are tranquil havens, offering a retreat from the hustle and bustle of daily life. Thoughtful design and attention to detail create a serene atmosphere for restful nights.

Indulge in the height of luxury with a four-piece bathroom suite that defines opulence. Immerse yourself in a relaxing bath or enjoy the separate shower enclosure, all complemented by stylish fixtures and impeccable craftsmanship.

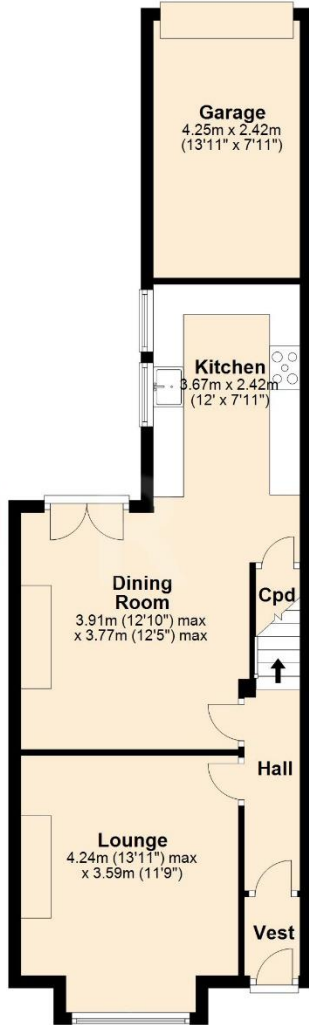


Step outside to discover enchanting outdoor spaces. A private garden provides a perfect retreat for al-fresco dining, gardening, or simply enjoying the fresh air.

This stone-fronted terraced house is not just a property; it's a statement of timeless elegance. With its charming exterior, well-appointed interiors, and modern amenities, it offers a unique and inviting living experience.

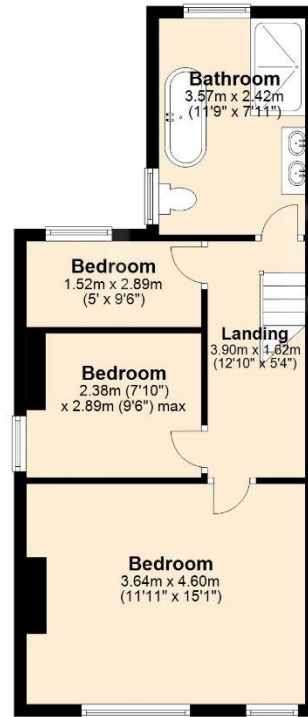
Ground Floor

Approx. 56.1 sq. metres (603.6 sq. feet)



First Floor

Approx. 43.6 sq. metres (469.3 sq. feet)



Total area: approx. 99.7 sq. metres (1072.9 sq. feet)

Disclaimer: This floorplan is for illustrative purposes only. All measurements are approximate and not guaranteed to be exact or to scale. Whilst all efforts have been made to ensure its accuracy we make no guarantee, warranty or representation and any buyer should confirm measurements using their own source. Created by EveryCloud Photography. Plan produced using PlanUp.

4 Smith Street, Rochdale
Lancashire, OL16 1TU

Tel: 01706 356633

Email: enquiries@reside.agency

www.reside.agency

"Once you find the property you want to buy, you will need to carry out more investigations into the property than it is practical or reasonable for an estate agent to do when preparing sales particulars. For example, we have not carried out any kind of survey of the property to look for structural defects and would advise any homebuyer to obtain a surveyor's report before exchanging contracts. If you do not have your own surveyor, we would be pleased to recommend one. We have not checked whether any equipment in the property (such as central heating) is in working order and would advise homebuyers to check this. You should also instruct a solicitor to investigate all legal matters relating to the property (e.g. title, planning permission etc) as these are specialist matters in which estate agents are not qualified. Your solicitor will also agree with the seller what items (e.g. carpets, curtains etc) will be included in the sale".